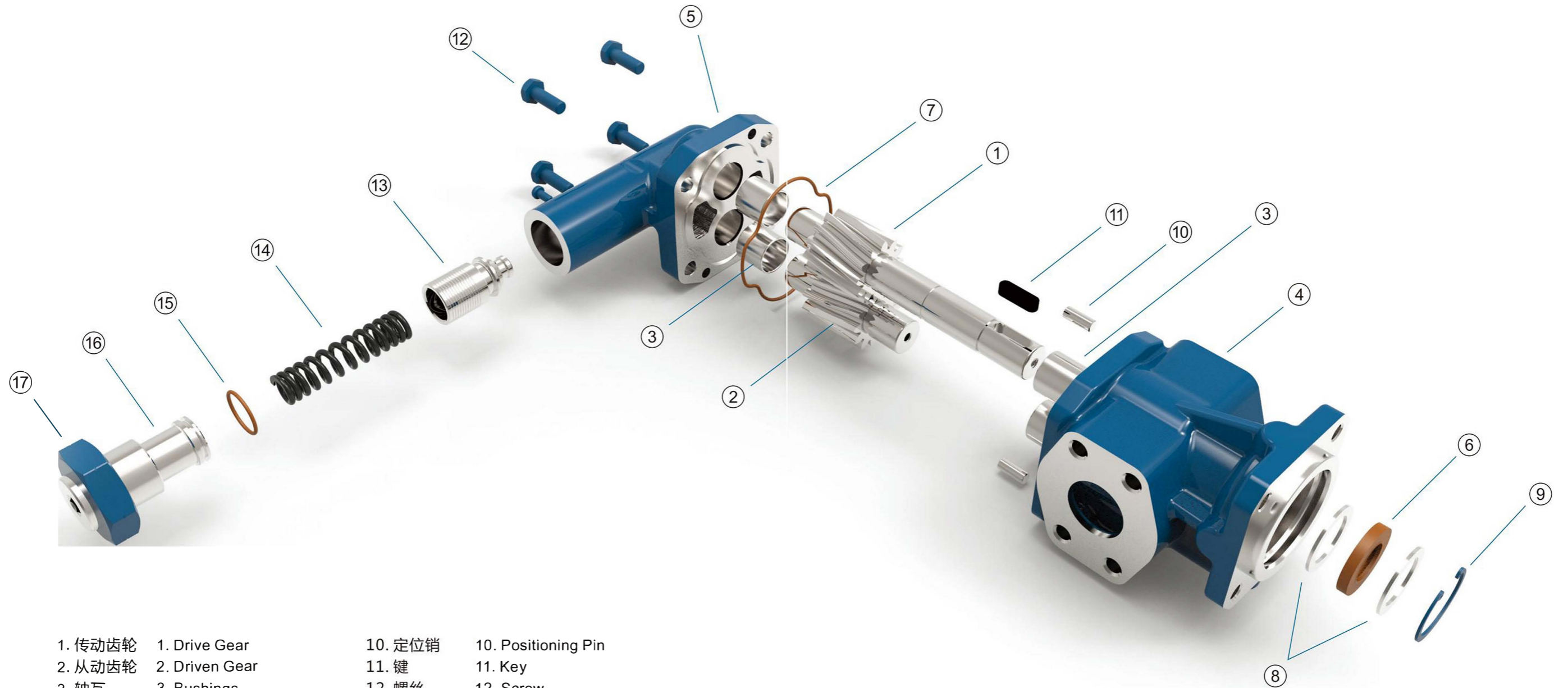


Korea

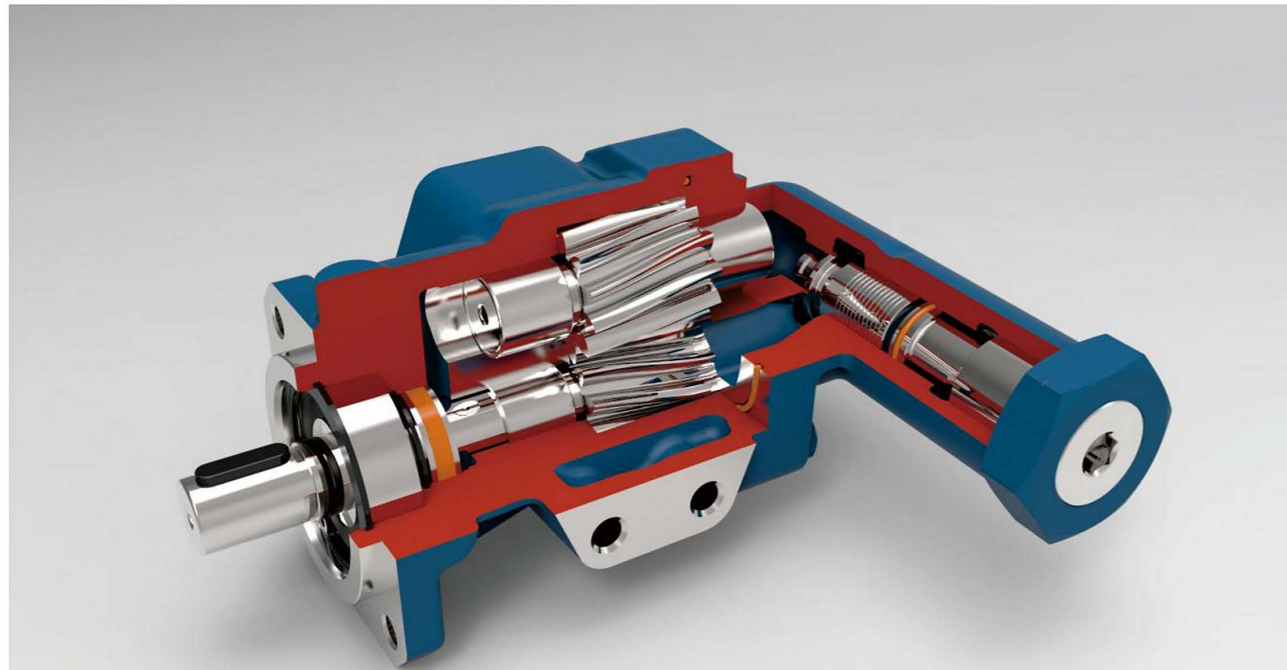
Hydraulics

》 Pump's parts 泵组件



- | | | | |
|---------|----------------------|----------|-----------------------|
| 1. 传动齿轮 | 1. Drive Gear | 10. 定位销 | 10. Positioning Pin |
| 2. 从动齿轮 | 2. Driven Gear | 11. 键 | 11. Key |
| 3. 轴瓦 | 3. Bushings | 12. 螺丝 | 12. Screw |
| 4. 壳体 | 4. Body | 13. 安全阀芯 | 13. Relief Valve Core |
| 5. 端盖 | 5. Cover | 14. 弹簧 | 14. Spring |
| 6. 旋转轴封 | 6. Rotary Shaft Seal | 15. 密封圈 | 15. Sealing Ring |
| 7. 密封圈 | 7. Sealing Ring | 16. 调节螺杆 | 16. Adjustable Screw |
| 8. 垫圈 | 8. Gasket | 17. 螺母 | 17. Nut |
| 9. 止推环 | 9. Stop Ring | | |

Structure and characteristics 产品结构和特点介绍



Features:

Asserted benchmark displacement (ml/r)
4 / 6 / 8 / 10 / 12 / 16 / 20 / 25 / 32 / 40 / 50 / 63 / 80 /
100 / 112 / 150 / 180 / 200
Adjusted numerical value of overflow valve:
16bar (according to the need to adopt a higher pressure)
Seal material: fluorine rubber
Applied viscosity (cSt) : 12~20000

Applied scope:

Reducer, wind power, lubrication system, filtration system,
gas stations, vacuum machine, engine...

Attention:

- Fluid has basic lubricating and compatible chemical characteristic, and it exclude solid impurity substance.
- Avoid idling
- The pump can only be operated in appointed direction, or else seal of the shaft will be wrecked.
- To avoid excessive pressure, the system or pump should be equipped with a relief valve.
- Mounted on the pump valve short-term relief effect, do not overflow valve.
- Installed it for a long time the overflow relief valve.

产品性能

- 标称排量 (ml/r) : 4 / 6 / 8 / 10 / 12 / 16 / 20 / 25 / 32 / 40 / 50 / 63 / 80 / 100 / 112 / 150 / 180 / 200
- 安全阀整定值 : 16bar (可根据需要采用更高压力)
- 密封材料 : 氟橡胶
- 应用粘度 (cSt) : 12~20000

应用范围

- 减速机 • 风力发电 • 润滑系统 • 过滤系统
- 加油站 • 真空机械 • 发动机

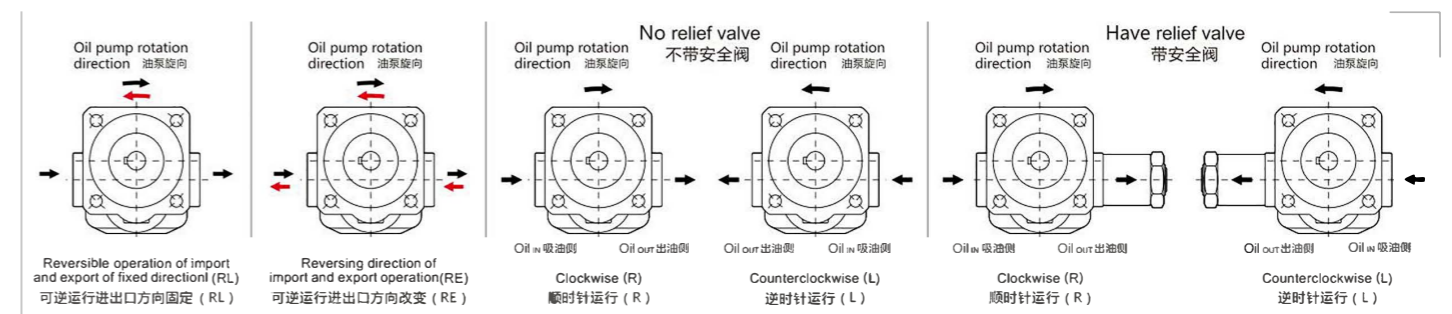
注意事项

- 流体应具有基本的润滑性, 不能含固体杂质, 且化学特性相容。
- 避免空转。
- 泵只能以标定旋转方向运转, 否则会破坏轴的密封性。
- 为避免过度压力, 系统或泵应安装安全阀。
- 装在泵上的安全阀起到短期泄压作用, 不可做溢流阀用。
- 长时间溢流需独立安装溢流阀。

Illustration of model choice 选型说明

Type 类型	Specifications 规格	Direction of rotation 旋向	Front bearing 前置轴承	Oil mouth size 油口尺寸	Seal type 密封类型	Pressure setting 压力设定	Material 泵体材质
ST	4 6 8 10 12 16 20 25 32 40 50 63 80 100 112 125 150 180 200	R (right)右 L (left)左 RL (Reversible operation of import and export of fixed direction, 32-80 emissions are optional) RL (可逆运行进出口方向固定, 32-80排量可选) RE (Reversing direction of import and export operation) RE (可逆运行进出口方向改变)	F (No front bearing) F (无前置轴承) G (Have front bearing) G (有前置轴承)	G3/4" G1" SAE1 1/2" SAE 2" SAE2 1/2" SAE 3"	N (Nitrile rubber) 丁腈 F (Fluorine rubber) 氟胶 FL (Low temperature fluorine rubber) 低温氟胶 FF (Double fluoro rubber) 双氟胶 S (others...) 其他...	None (no overflow valve) 不标 (无溢流阀) D-0~25 (The factory set 15 bar pressure) D-0~25 (压力设定标准品出厂设定15bar)	None 不标 (GG250) 4-80排量 QT (GGG400) 80-200排量

Direction of rotation 旋转方向



Technical data (rotation rate 950rpm) 输送泵技术参数 (转速 950rpm)

Pump type 泵型号	Parameter 参数	Pressure (bar) 压力								Displacement (cm ³ /rev) 排量
		2.0	4.0	6.0	8.0	10.0	15.0	20.0	25.0	
ST4	l/min	3.80	3.70	3.70	3.60	3.50	3.40	3.20	3.00	4
	NKW	0.05	0.06	0.07	0.08	0.09	0.13	0.16	0.20	
	KW	0.25	0.25	0.25	0.25	0.25	0.25	0.25	0.37	
ST6	l/min	5.80	5.70	5.60	5.50	5.40	5.10	4.90	4.70	6
	NKW	0.06	0.07	0.09	0.12	0.14	0.19	0.25	0.30	
	KW	0.25	0.25	0.25	0.25	0.25	0.37	0.37	0.55	
ST8	l/min	7.40	7.30	7.20	7.10	6.90	6.60	6.30	5.90	8
	NKW	0.08	0.09	0.12	0.14	0.17	0.24	0.32	0.38	
	KW	0.25	0.25	0.25	0.25	0.25	0.37	0.55	0.55	
ST10	l/min	9.20	9.00	8.90	8.70	8.60	8.20	7.70	7.30	10
	NKW	0.09	0.10	0.14	0.17	0.21	0.29	0.38	0.47	
	KW	0.25	0.25	0.25	0.25	0.37	0.37	0.55	0.75	
ST12	l/min	11.40	11.30	11.10	10.90	10.70	10.20	9.70	9.40	12
	NKW	0.10	0.12	0.16	0.21	0.25	0.36	0.47	0.58	
	KW	0.25	0.25	0.25	0.37	0.37	0.55	0.75	0.75	
ST16	l/min	14.70	14.60	14.30	14.00	13.80	13.30	12.60	11.90	16
	NKW	0.12	0.15	0.20	0.26	0.31	0.45	0.60	0.74	
	KW	0.25	0.25	0.37	0.37	0.55	0.55	0.75	1.10	
ST20	l/min	18.50	18.30	18.00	17.60	17.30	16.50	15.80	14.90	20
	NKW	0.14	0.18	0.25	0.32	0.39	0.56	0.74	0.92	
	KW	0.25	0.25	0.37	0.55	0.55	0.75	1.10	1.50	
ST25	l/min	23.10	22.60	22.30	21.90	21.50	20.60	19.70	18.30	25
	NKW	0.16	0.21	0.30	0.39	0.48	0.70	0.92	1.14	
	KW	0.25	0.37	0.55	0.55	0.75	1.10	1.50	1.50	

Technical data (rotation rate 950rpm) 输送泵技术参数 (转速 950rpm)

Pump type 泵型号	Parameter 参数	Pressure (bar) 压力								Displacement (cm ³ /rev) 排量
		2.0	4.0	6.0	8.0	10.0	15.0	20.0	25.0	
ST32	l/min	29.00	29.00	28.00	28.00	27.00	26.00	25.00	23.00	32
	NKW	0.27	0.30	0.40	0.50	0.60	0.90	1.20	1.50	
	KW	0.37	0.55	0.55	0.75	0.75	1.50	1.50	2.20	
ST40	l/min	37.00	36.00	36.00	35.00	34.00	33.00	31.00	29.00	40
	NKW	0.28	0.40	0.50	0.60	0.80	1.10	1.50	1.80	
ST50	l/min	46.00	45.00	44.00	43.00	43.00	41.00	38.00	36.00	50
	NKW	0.40	0.50	0.60	0.80	1.00	1.40	1.90	2.30	
ST63	l/min	58.00	57.00	56.00	55.00	54.00	51.00	48.00	45.00	63
	NKW	0.50	0.60	0.80	1.00	1.20	1.80	2.40	2.90	
ST80	l/min	73.0	72.0	71.0	69.0	68.0	65.0	67.0	58.0	80
	NKW	0.60	0.70	1.00	1.30	1.60	2.30	3.00	3.70	
ST100	l/min	93.00	92.00	89.00	88.00	87.00	83.00	80.00	77.00	100
	NKW	0.60	0.90	1.30	1.80	2.30	3.20	3.90	4.40	
ST112	l/min	100.00	99.00	97.00	96.00	94.00	93.00	88.00	83.00	112
	NKW	0.80	1.00	1.60	2.20	2.80	3.50	4.50	5.00	
ST125	l/min	118.00	113.00	108.00	102.00	97.00	93.00	88.00	84.00	125
	NKW	1.60	1.50	1.70	1.80	2.40	3.60	4.90	6.00	
ST150	l/min	142.00	138.00	134.00	129.00	124.00	119.00	113.00	107.00	150
	NKW	2.10	2.20	2.30	2.50	3.10	4.40	5.80	7.20	
ST180	l/min	171.00	167.00	163.00	157.00	151.00	145.00	140.00	133.00	180
	NKW	2.20	2.60	2.70	3.00	3.90	5.40	6.90	8.40	
ST200	l/min	190.00	186.00	182.00	176.00	171.00	166.00	161.00	154.00	200
	NKW	2.90	3.00	3.10	3.50	4.40	6.00	7.70	9.30	
	KW	4.00	4.00	4.00	5.50	5.50	7.50	11.00	11.00	

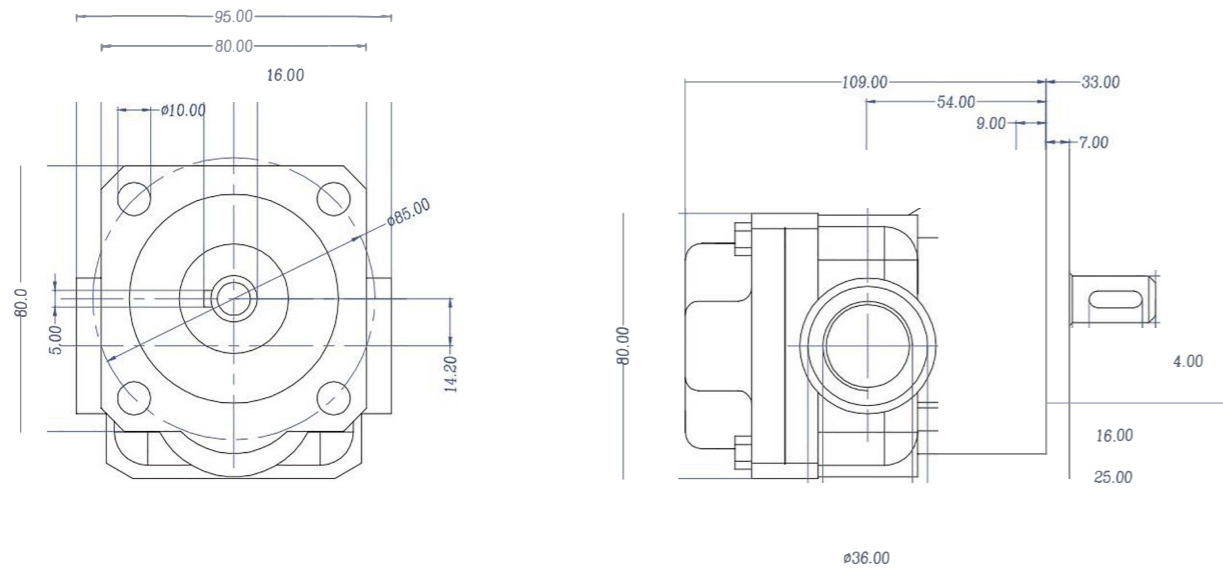
Technical data (rotation rate 1450rpm) 输送泵技术参数 (转速 1450rpm)

Pump type 泵型号	Parameter 参数	Pressure (bar) 压力								Displacement (cm ³ /rev) 排量
		2.0	4.0	6.0	8.0	10.0	15.0	20.0	25.0	
ST4	l/min	5.70	5.60	5.60	5.50	5.40	5.30	5.10	4.90	4
	NKW	0.10	0.13	0.16	0.18	0.21	0.29	0.30	0.35	
	KW	0.25	0.25	0.25	0.25	0.37	0.37	0.37	0.37	
ST6	l/min	9.00	8.90	8.80	8.70	8.60	8.30	8.00	7.80	6
	NKW	0.08	0.11	0.15	0.18	0.21	0.30	0.38	0.47	
	KW	0.25	0.25	0.25	0.37	0.37	0.55	0.55	0.75	
ST8	l/min	11.30	11.20	11.10	10.90	10.90	10.50	10.20	9.80	8
	NKW	0.15	0.19	0.24	0.29	0.33	0.40	0.54	0.65	
	KW	0.25	0.25	0.37	0.37	0.55	0.53	0.75	0.75	
ST10	l/min	14.20	14.10	14.00	13.80	13.60	13.20	12.80	12.40	10
	NKW	0.18	0.19	0.23	0.30	0.35	0.46	0.58	0.72	
	KW	0.25	0.25	0.25	0.37	0.55	0.55	0.75	1.10	
ST12	l/min	17.20	17.10	17.00	16.90	16.80	16.50	15.90	15.40	12
	NKW	0.20	0.21	0.28	0.32	0.39	0.55	0.72	0.89	
	KW	0.25	0.25	0.37	0.55	0.55	0.75	1.10	1.10	
ST16	l/min	22.60	22.40	22.20	22.00	21.70	21.10	20.50	19.80	16
	NKW	0.24	0.31	0.38	0.45	0.57	0.82	1.02	1.33	
	KW	0.37	0.37	0.55	0.55	0.75	1.10	1.10	1.50	
ST20	l/min	29.77	28.90	28.03	27.40	27.10	26.40	25.60	24.70	20
	NKW	0.26	0.36	0.44	0.53	0.63	0.87	1.14	1.41	
	KW	0.37	0.55	0.55	0.75	1.10	1.10	1.50	2.20	
ST25	l/min	36.50	36.20	35.70	35.20	34.60	33.20	32.40	31.00	25
	NKW	0.46	0.60	0.73	0.88	1.00	1.18	1.50	1.75	
	KW	0.55	0.75	1.10	1.10	1.50	1.50	2.20	2.20	

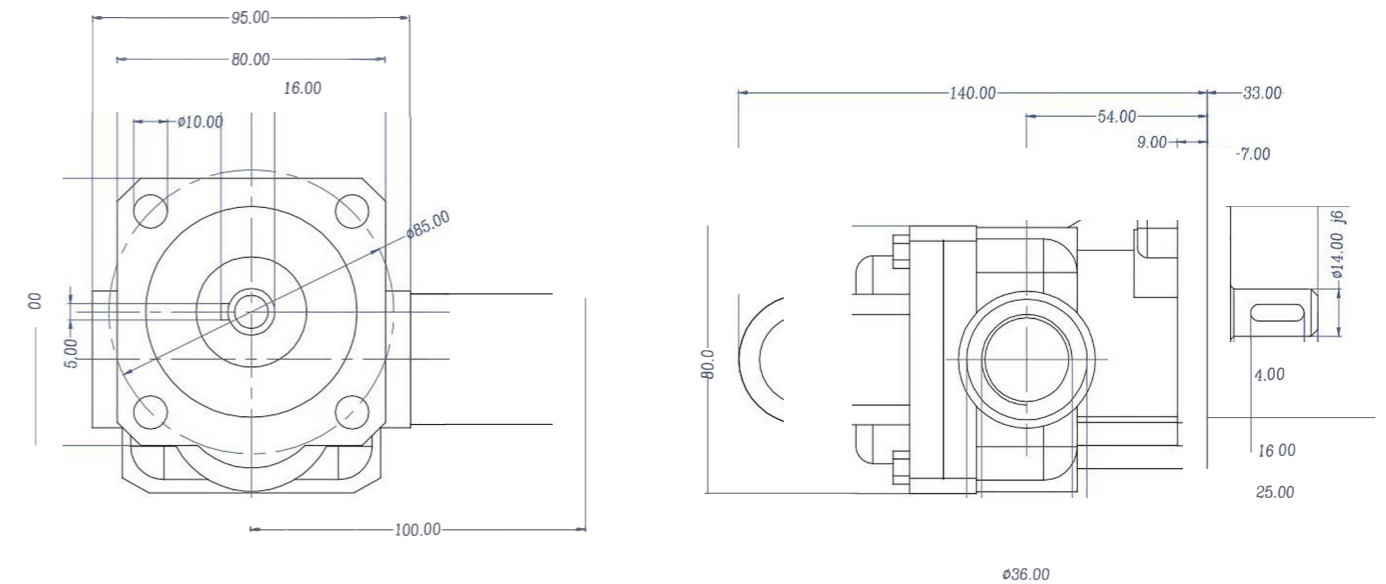
Technical data (rotation rate 1450rpm) 输送泵技术参数 (转速 1450rpm)

Pump type 泵型号	Parameter 参数	Pressure (bar) 压力								Displacement (cm ³ /rev) 排量
		2.0	4.0	6.0	8.0	10.0	15.0	20.0	25.0	
ST32	l/min	46.00	46.00	45.00	44.00	44.00	43.00	42.00	41.00	32
	NKW	0.54	0.70	0.82	1.12	1.29	1.60	2.10	2.40	
	KW	0.75	1.10	1.10	1.50	1.50	2.20	3.00	4.00	
ST40	l/min	57.00	57.00	56.00	56.00	55.00	53.00	51.00	50.00	40
	NKW	0.60	0.80	1.00	1.20	1.40	1.80	2.40	2.90	
	KW	0.75	1.10	1.50	1.50	2.20	2.20	3.00	4.00	
ST50	l/min	72.00	71.70	71.50	71.00	69.00	67.00	65.00	63.00	50
	NKW	0.70	0.94	1.23	1.47	1.74	2.20	2.80	3.50	
	KW	1.10	1.50	1.50	2.20	2.20	3.00	4.00	5.50	
ST63	l/min	91.50	91.00	90.60	90.00	89.00	86.70	85.70	84.00	63
	NKW	1.05	1.34	1.64	1.93	2.24	2.90	3.80	4.50	
	KW	1.50	2.20	2.20	3.00	3.00	4.00	5.50	5.50	
ST80	l/min	119.0	119.0	119.0	118.0	116.0	110.0	106.0	99.0	80
	NKW	1.20	1.50	1.87	2.30	2.60	3.40	4.30	5.20	
	KW	1.50	2.20	3.00	3.00	4.00	5.50	5.50	7.50	
ST100	l/min	142.00	141.00	138.00	137.00	136.00	132.00	129.00	126.00	100
	NKW	1.20	1.70	2.20	2.70	3.20	4.40	5.70	6.90	
	KW	1.50	2.20	3.00	4.00	4.00	5.50	7.50	11.00	
ST112	l/min	157.00	156.00	154.00	153.00	151.00	150.00	145.00	140.00	112
	NKW	1.40	2.00	2.60	3.10	3.70	5.10	6.50	7.80	
	KW	2.20	3.00	3.00	4.00	5.50	7.50	7.50	11.00	
ST125	l/min	182.00	178.00	174.00	170.00	167.00	160.00	154.00	149.00	125
	NKW	2.40	2.50	2.60	3.20	3.80	5.40	7.40	9.30	
	KW	3.00	3.00	3.00	4.00	5.50	7.50	11.00	11.00	
ST150	l/min	223.00	219.00	215.00	211.00	208.00	199.00	191.00	183.00	150
	NKW	3.30	3.30	3.50	3.80	4.70	6.70	8.90	11.00	
	KW	4.00	4.00	4.00	5.50	5.50	7.50	11.00	15.00	
ST180	l/min	267.00	263.00	259.00	255.00	252.00	243.00	235.00	228.00	180
	NKW	3.90	4.00	4.10	4.70	5.90	8.20	10.60	12.80	
	KW	5.50	5.50	5.50	5.50	7.50	11.00	15.00	15.00	
ST200	l/min	292.00	289.00	286.00	283.00	280.00	273.00	266.00	259.00	200
	NKW	4.40	4.60	4.80	5.30	6.70	9.20	11.70	14.20	
	KW	5.50	5.50	5.50	7.50	7.50	11.00	15.00	18.50	

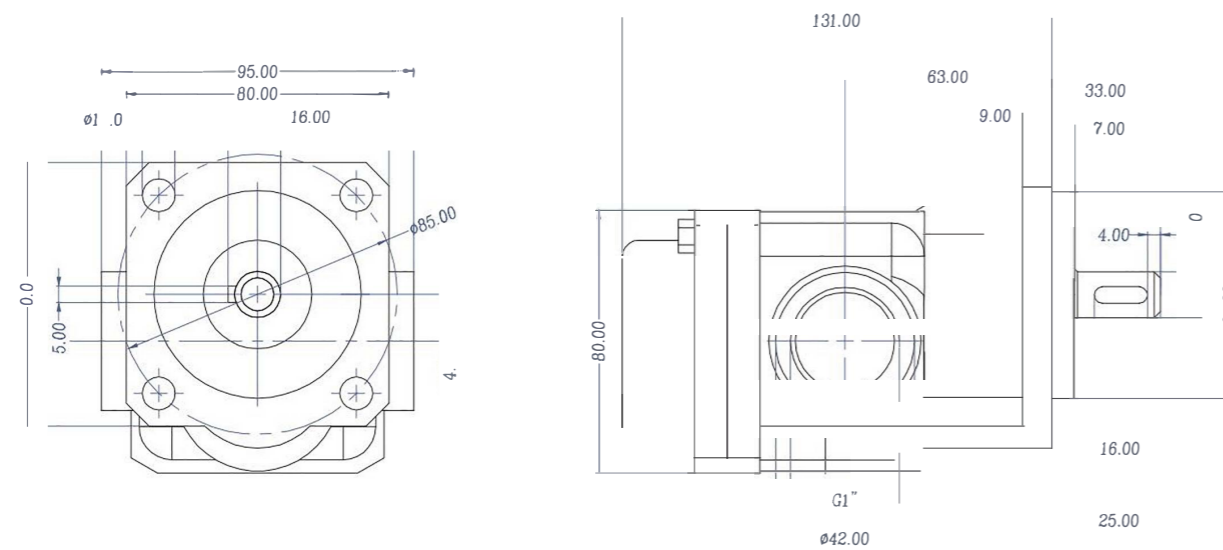
ST04-12



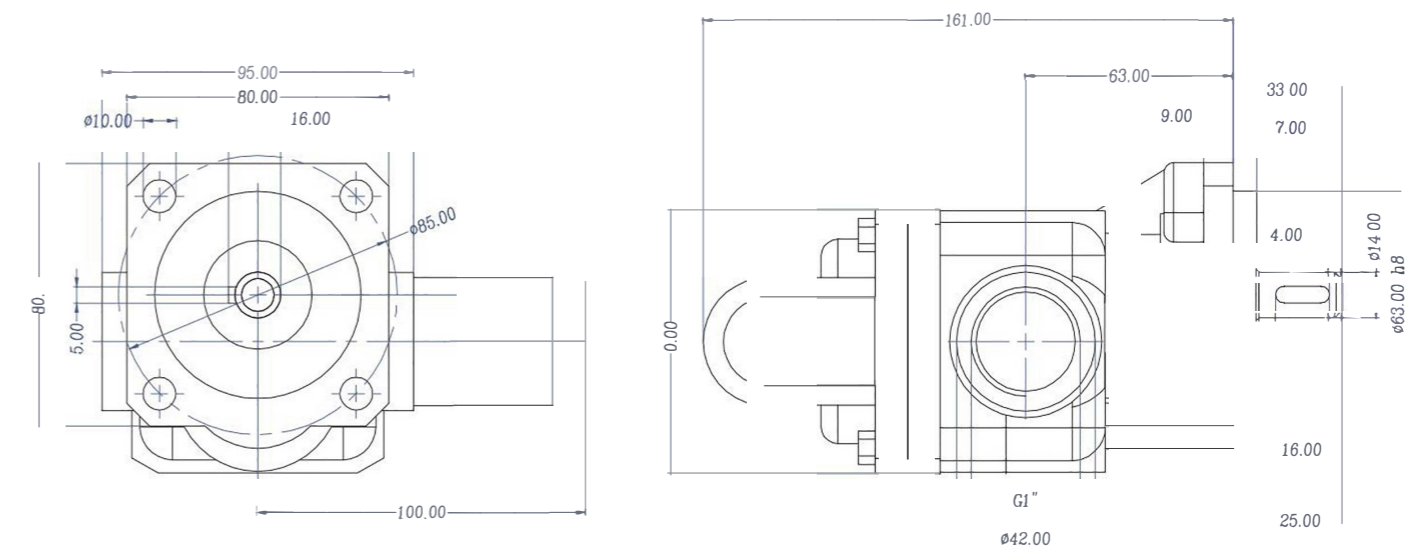
ST04-12-D15 (With relief valve) 带安全阀



ST16-25

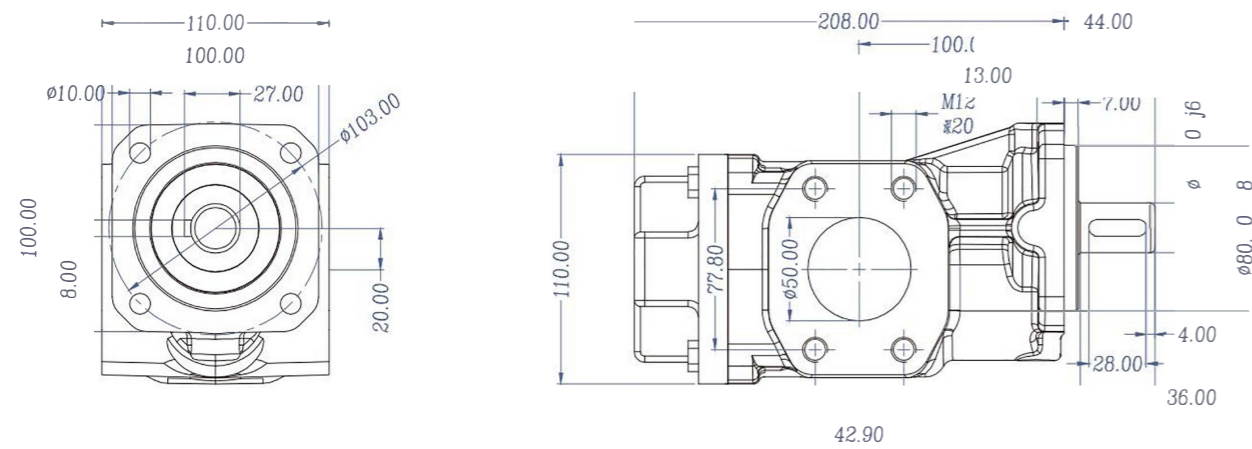


ST16-25-D15 (With relief valve) 带安全阀



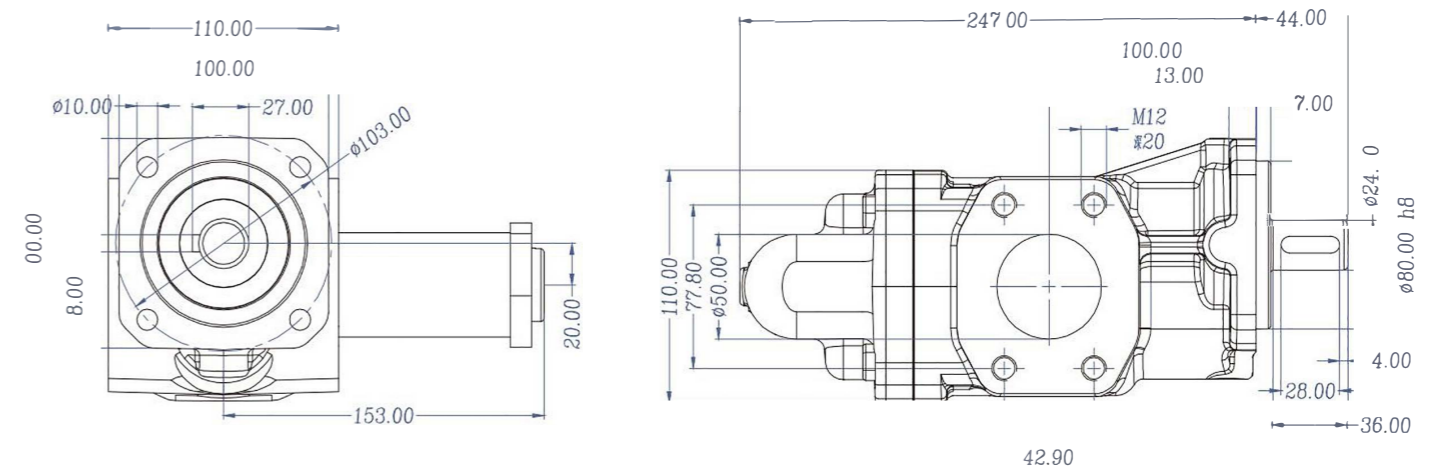
» Installation size of the conveying pump 输送泵安装尺寸

ST63-80 (SAE2")

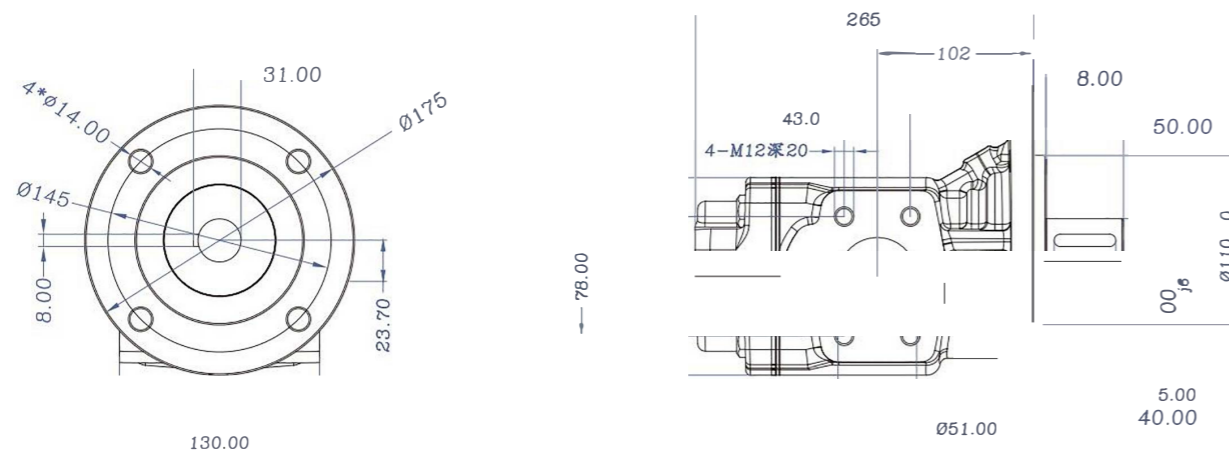


» Installation size of the conveying pump 输送泵安装尺寸

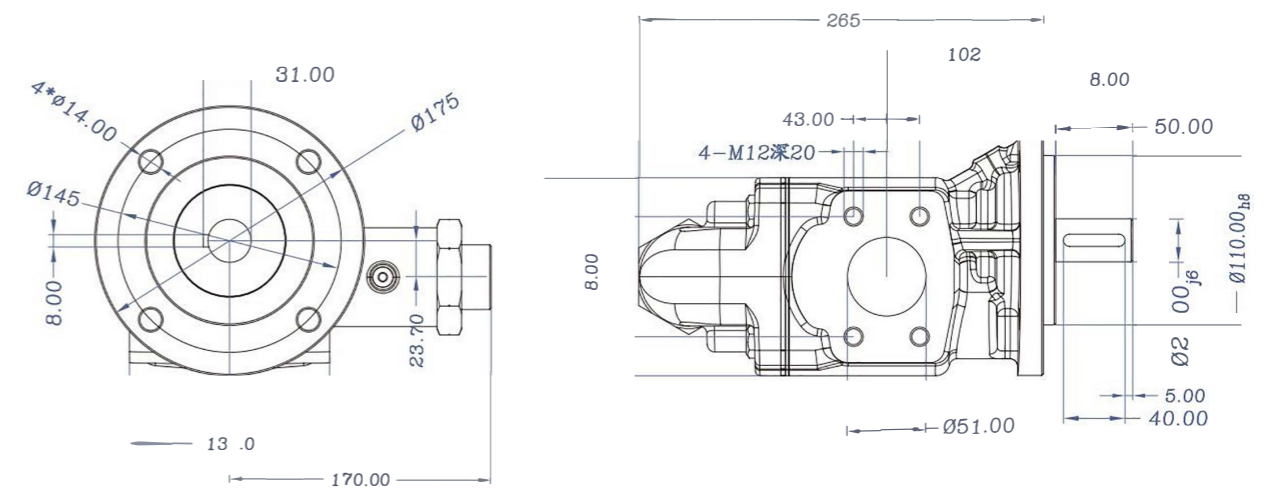
ST63-80 (SAE2")-D15 (With relief valve)带安全阀



ST100-112

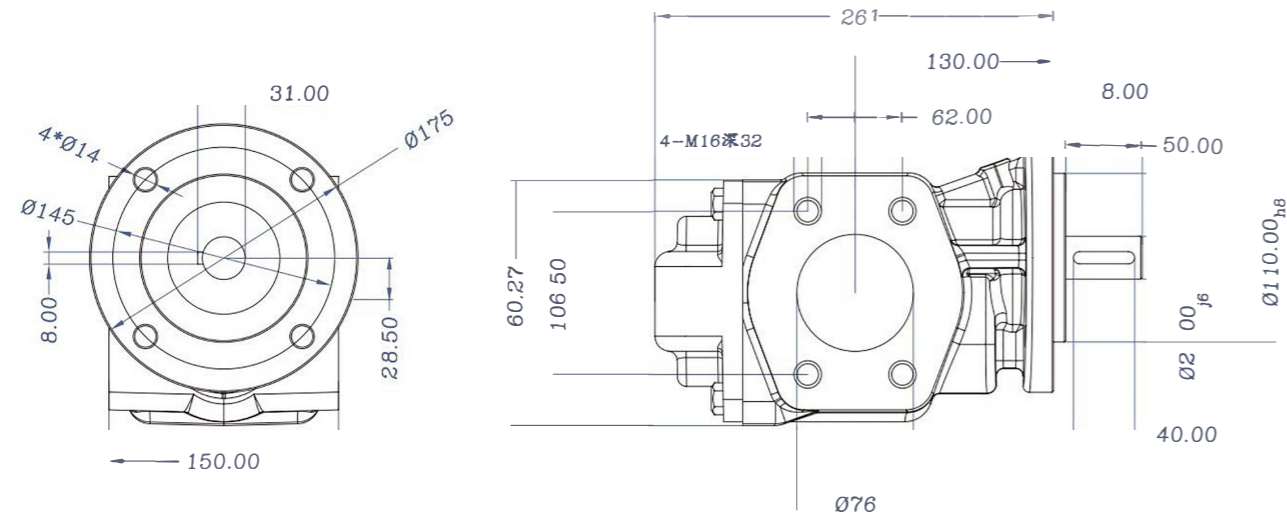


ST100-112 (With relief valve)带安全阀



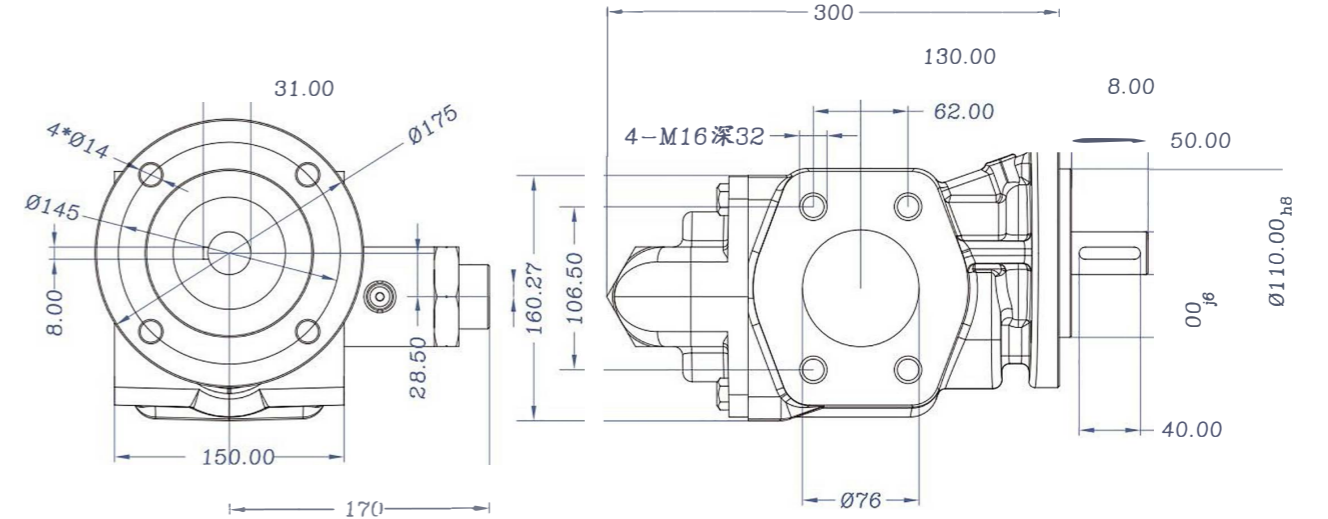
Installation size of the conveying pump 输送泵安装尺寸

ST125-200

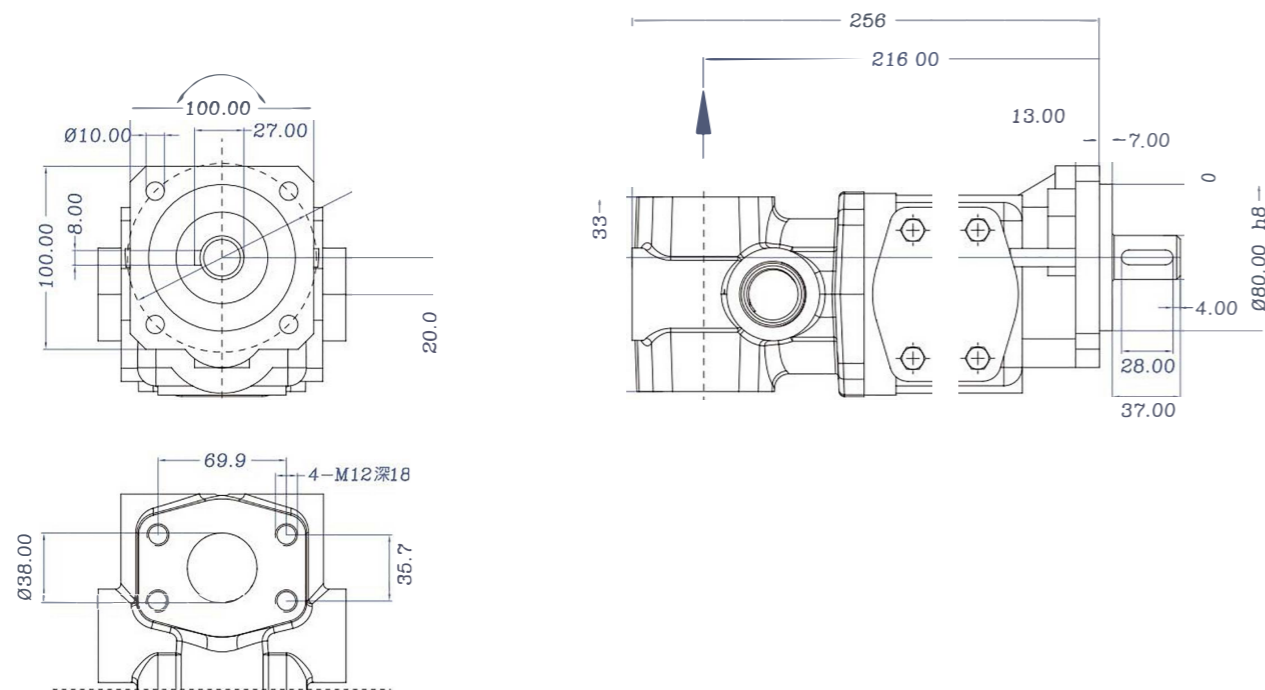


Installation size of the conveying pump 输送泵安装尺寸

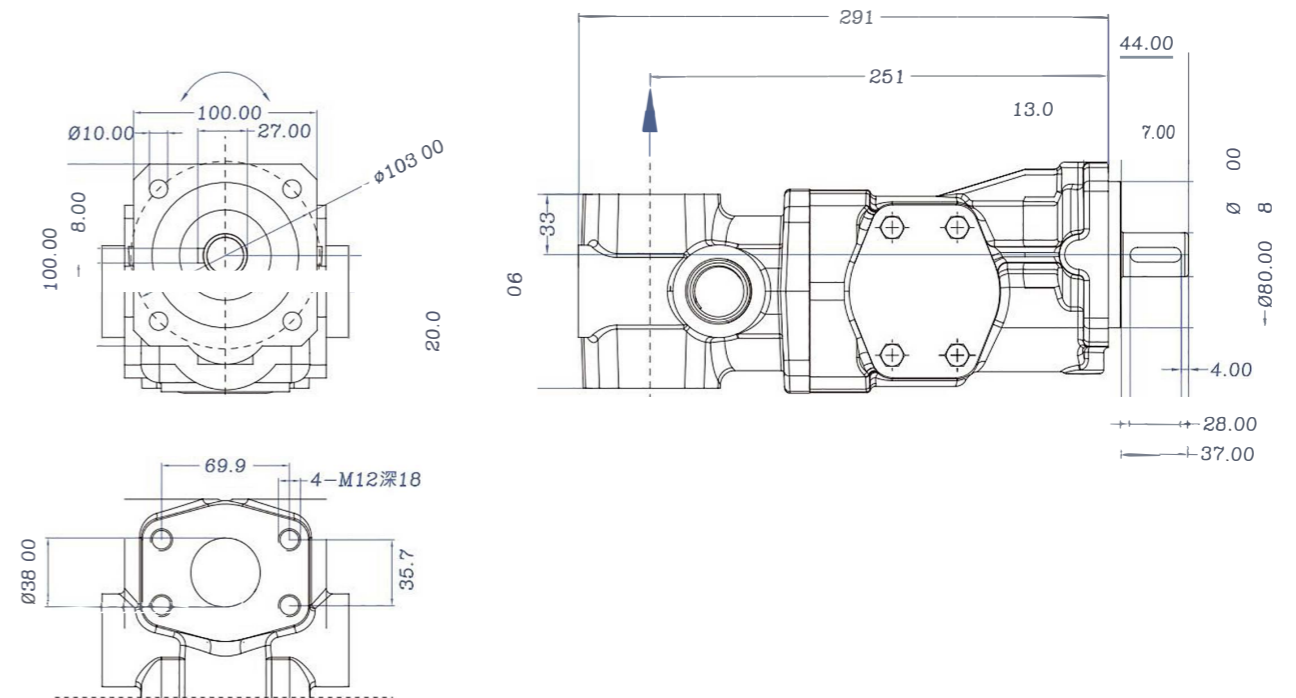
ST125-200 (With relief valve) 带安全阀



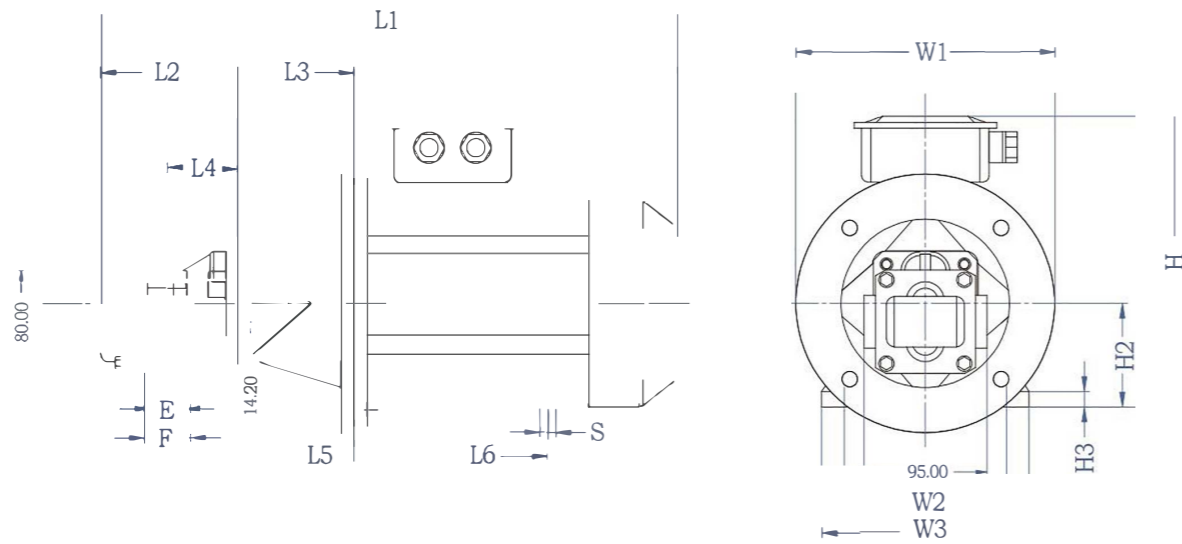
ST32-50 (RL twin twist) 双旋向



ST63-80 (RL twin twist) 双旋向



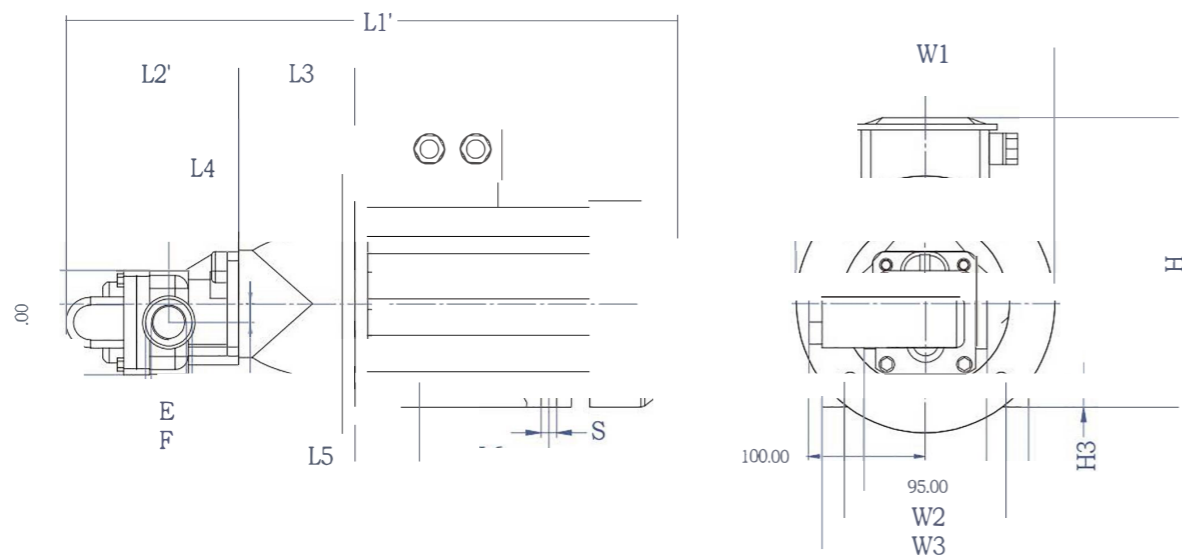
STK4-25



STK4-12

Motor frame number 电机机座号	6P		4P		L1	L1'	L2	L2'	L3	L4	L5	L6	W1	W2	W3	H1	H2	H3	S	E	
	Power (KW) 功率	Speed (r/min) 转速	Power (KW) 功率	Speed (r/min) 转速																	
71S			0.25	1390	405	436	109	140	80	54	45	90	160	112	140	181	71	9	7	G3/4"	φ36
71	0.25	920	0.37	1380	405	436	109	140	80	54	45	90	160	112	140	181	71	9	7	G3/4"	φ36
80S	0.37	900	0.55	1370	459	490	109	140	100	54	50	100	200	125	160	208	80	12	10	G3/4"	φ36
80	0.55	900	0.75	1420	459	490	109	140	100	54	50	100	200	125	160	208	80	12	10	G3/4"	φ36
90S	0.75	960	1.1	1420	494	525	109	140	100	54	56	100	200	140	175	222	90	13	10	G3/4"	φ36
90L	1.1	950	1.5	1450	520	551	109	140	100	54	56	125	200	140	175	222	90	13	10	G3/4"	φ36

STK4-25-D15

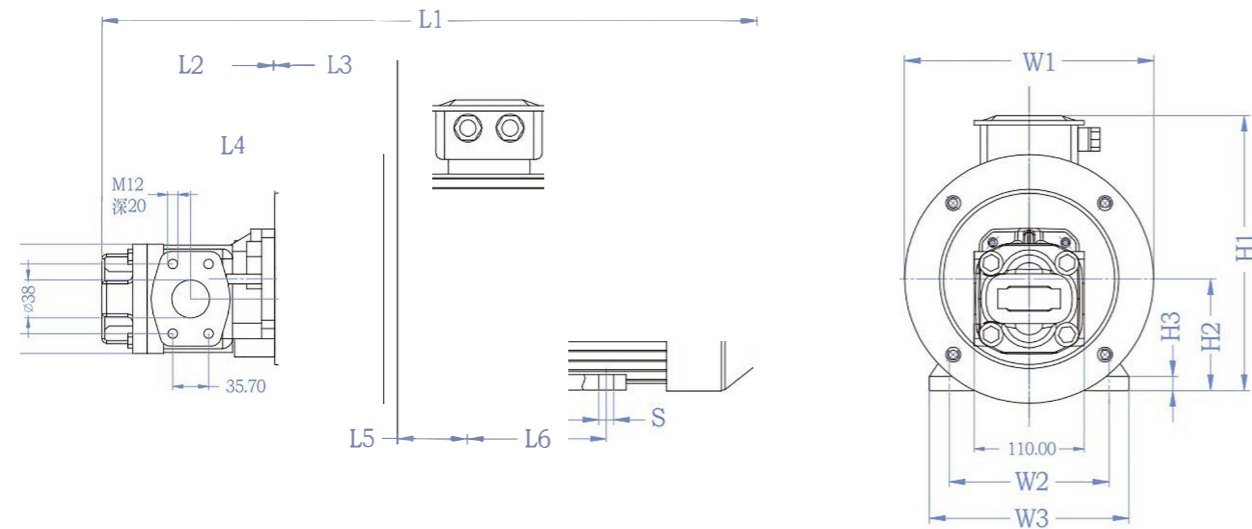


STK16-25

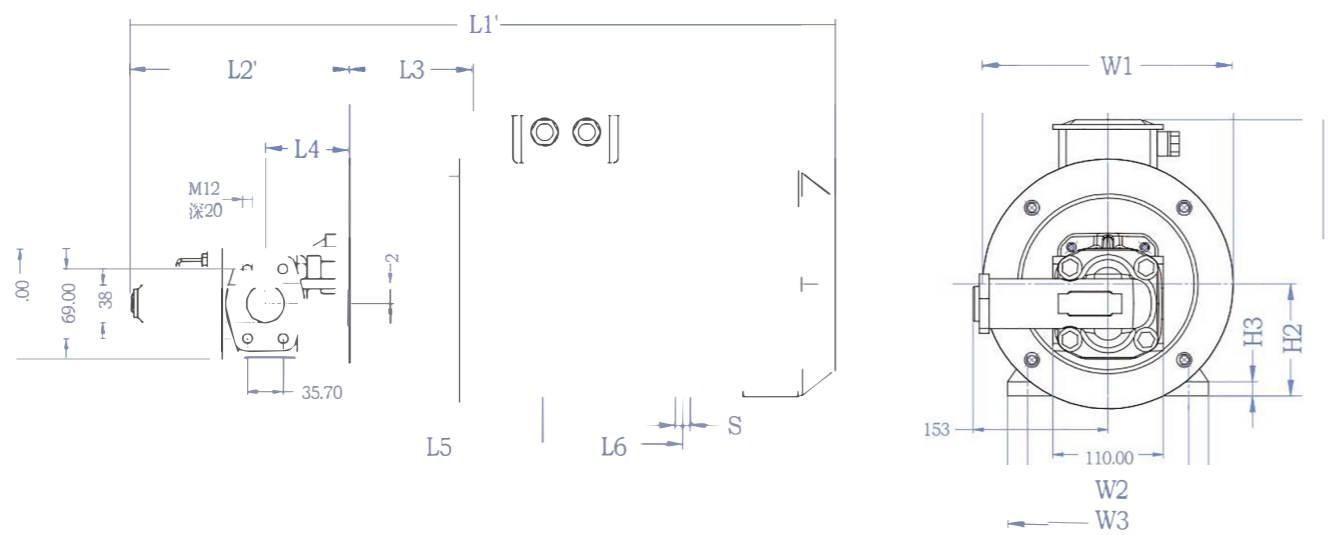
Motor frame number 电机机座号	6P		4P		L1	L1'	L2	L2'	L3	L4	L5	L6	W1	W2	W3	H1	H2	H3	S	E	
	Power (KW) 功率	Speed (r/min) 转速	Power (KW) 功率	Speed (r/min) 转速																	
71	0.25	920	0.37	1380	427	458	131	162	80	63	45	90	160	112	140	181	71	9	7	G1"	φ42
80S	0.37	900	0.55	1370	481	512	131	162	100	63	50	100	200	125	160	208	80	12	10	G1"	φ42
80	0.55	900	0.75	1420	481	512	131	162	100	63	50	100	200	125	160	208	80	12	10	G1"	φ42
90S	0.75	960	1.1	1420	516	547	131	162	100	63	56	100	200	140	175	222	90	13	10	G1"	φ42
90L	1.1	950	1.5	1450	543	573	131	162	100	63	56	125	200	140	175	222	90	13	10	G1"	φ42
100L1			2.2	1440	605	636	131	162	124	63	63	140	250	160	205	247	100	12	12	G1"	φ42
100L2	1.5	960	3	1440	605	636	131	162	124	63	63	140	250	160	205	247	100	12	12	G1"	φ42

Installation sizes of motor pump set 电机输送泵组安装尺寸

STK32-80



STK32-80-D15



Installation sizes of motor pump set 电机输送泵组安装尺寸

STK32-50

Motor frame number 电机机座号	6P		4P		L1	L1'	L2	L2'	L3	L4	L5	L6	W1	W2	W3	H1	H2	H3	
	Power (KW) 功率	Speed (r/min) 转速	Power (KW) 功率	Speed (r/min) 转速															
80S	0.37	900	0.55	1370	532	571	172	211	110	84	50	100	200	125	160	208	80	12	10
80	0.55	900	0.75	1420	532	571	172	211	110	84	50	100	200	125	160	208	80	12	10
90S	0.75	960	1.1	1420	567	606	172	211	110	84	56	100	200	140	175	222	90	13	10
90L	1.1	950	1.5	1450	593	632	172	211	110	84	56	125	200	140	175	222	90	13	10
100LS			2.2	1440	646	685	172	211	124	84	63	140	250	160	205	247	100	12	12
100L	1.5	960	3	1440	646	685	172	211	124	84	63	140	250	160	205	247	100	12	12
112M	2.2	960	4	1450	658	697	172	211	124	84	70	140	250	190	222	281	112	13	12
132S	3	960	5.5	1450	698	737	172	211	144	84	89	140	300	216	256	320	132	16.5	12
132M1	4	960	7.5	1460	736	775	172	211	144	84	89	178	300	216	256	320	132	16.5	12
132M2	5.5	960			761	780	172	211	144	84	89	178	300	216	256	320	132	16.5	12
160M	7.5	970	11	1460	865	904	172	211	188	84	108	210	350	254	320	437	160	20	14.5

STK63-80

Motor frame number 电机机座号	6P		4P		L1	L1'	L2	L2'	L3	L4	L5	L6	W1	W2	W3	H1	H2	H3	
	Power (KW) 功率	Speed (r/min) 转速	Power (KW) 功率	Speed (r/min) 转速															
80S	0.37	900	0.55	1370	568	607	208	247	110	100	50	100	200	125	160	208	80	12	10
80	0.55	900	0.75	1420	568	607	208	247	110	100	50	100	200	125	160	208	80	12	10
90S	0.75	960	1.1	1420	603	642	208	247	110	100	56	100	200	140	175	222	90	13	10
90L	1.1	950	1.5	1450	629	668	208	247	110	100	56	125	200	140	175	222	90	13	10
100LS			2.2	1440	682	721	208	247	124	100	63	140	250	160	205	247	100	12	12
100L	1.5	960	3	1440	682	721	208	247	124	100	63	140	250	160	205	247	100	12	12
112M	2.2	960	4	1450	694	733	208	247	124	100	70	140	250	190	222	281	112	13	12
132S	3	960	5.5	1450	734	773	208	247	144	100	89	140	300	216	256	320	132	16.5	12
132M1	4	960	7.5	1460	772	811	208	247	144	100	89	178	300	216	256	320	132	16.5	12
132M2	5.5	960			797	836	208	247	144	100	89	178	300	216	256	320	132	16.5	12
160M	7.5	970	11	1460	901	940	208	247	188	100	108	210	350	254	320	437	160	20	14.5

