

DA series pilot operated unloading valves
DAW series solenoid operated unloading valve



DA series pilot operated unloading valves and DBW series solenoid operated unloading valves are used to unload the oil pumps' pressure in a hydraulic system with accumulator. The valve allows high-pressure pump to operate and low-pressure pump to unload pressure.

Technical specification

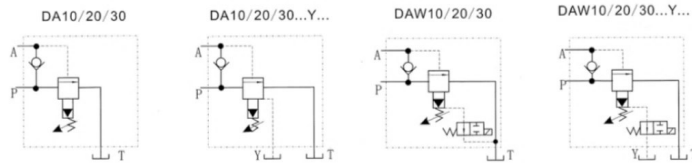
| Model | DA-10 | DAW-10 | DA-20 | DAW-20 | DA-30 | DAW-30 |
|------------------------|-------|--------|-------|--------|-------|--------|
| Max. flow rate (l/min) | 40 | | 100 | | 250 | |
| Working pressure (MPa) | 31.5 | | | | | |
| Weight(kgs) | 3.8 | 4.9 | 7.7 | 8.8 | 13.4 | 14.5 |

Ordering details

| DA | W | 10 | A | 1 | 30 | 80 |
|--------------------------------|---|-------------------------------|----------------------------------|--|---------------|--|
| Sort | With solenoid valve | Nominal size | Normal state | Adjustment type | Series number | Pressure adjustment range |
| Pilot operated unloading valve | No code: Without solenoid valve W: With solenoid valve | 10:NG10 20:NG20 30:NG30 | A:Normal closed B:Normal open | 1:Rotary knob 2:Sleeve with hexagon and protective cap 3:Lockable rotary knob with scale | 30:30 series | 80:2~8MPa 160:8~16MPa 315:16~31.5MPa |

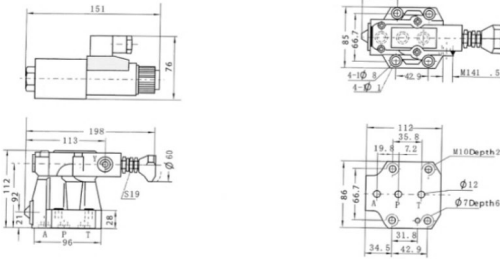
| Y | G24 | N | Z4L | V |
|--|------------------------|---|---|---|
| Oil control | Input voltage | Manual override | Connector type | Seals |
| No code: Internal control internal drain Y: Internal control external drain | G24:DC24 W220:AC220 | No code: Without manual override N: With manual override | Z4: Standart plug-in connector Z4L: Plug-in connector with light | No code: NBR seals for petroleum oils V: FPM seals for phosphate ester |

Symbol list

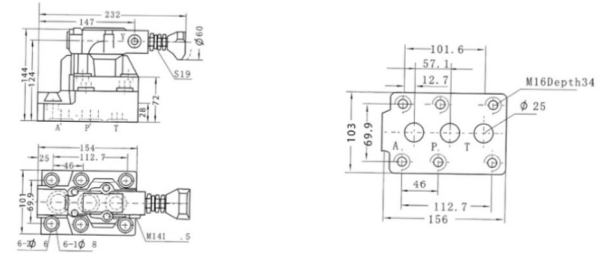


Dimensions
DA/DAW-10

Unit: mm



DA/DAW-20



DA/DAW-30

