

Ordering code

M	SEW	6	3X	M	K4	*
---	-----	---	----	---	----	---

2 actuator ports = 2
 3 actuator ports = 3
 4 actuator ports = 4

Poppet valve

Nominal size 6 = 6

Actuator ports	2	3	4	
Symbols				
	●	-	-	= P
	●	-	-	= N
	-	●	-	= U
	-	●	-	= C
	-	-	●	= D
	-	-	●	= Y
	● = available			

Series 30 to 39 = 3X

(30 to 39: externally interchangeable)

Operating pressure 6100 PSI (420 bar)
 (10-24/M5 mounting bolts) = 420

Operating pressure up to 9150 PSI (630 bar)
 (1/4-20/M6 mounting bolts) = 630

AC supply (permissible voltage tolerance ±10%)	Nominal voltage of the DC solenoid when used with an AC voltage	Order detail
110 V - 50/60 Hz	96 V	G96
120 V - 60 Hz	110 V	G110
230 V - 50/60 Hz	205 V	G205

Further details in clear text

No code = NBR seals

V = FPM seals
 (other seals on request)

⚠ Attention!

The compatibility of the seals
 and pressure fluid has to
 be taken into account!

No code = Without cartridge
 check valve,
 without throttle insert

P = With cartridge check valve

B12 = Throttle Ø 0.047 in (1.2 mm)

B15 = Throttle Ø 0.059 in (1.5 mm)

B18 = Throttle Ø 0.071 in (1.8 mm)

B20 = Throttle Ø 0.079 in (2.0 mm)

B22 = Throttle Ø 0.087 in (2.2 mm)

Electrical connection

K4^{1;2)} = Individual connection, with component
 plug DIN 43 650-AM2,
 without plug-in connector

N9 = With protected manual override

No code = Without manual override

G24 = 24 V DC

G205²⁾ = 205 V DC

M = Solenoid (air gap) with removable coil

Note: Other models of actuators (e.g. pneumatic, hydraulic, rotary
 knob, rotary knob with lock, plunger, lever, roller lever) on request!

¹⁾ Plug-in connectors must be ordered separately (see page 3).

For additional connector information, see datasheet RA 08 006.

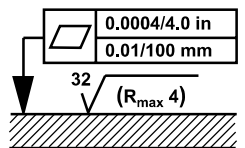
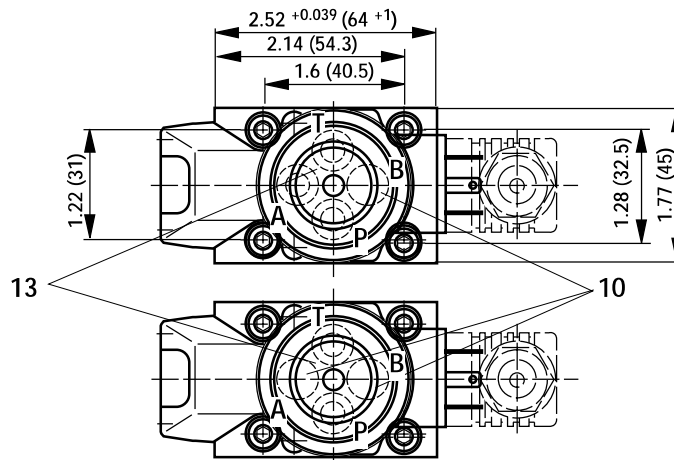
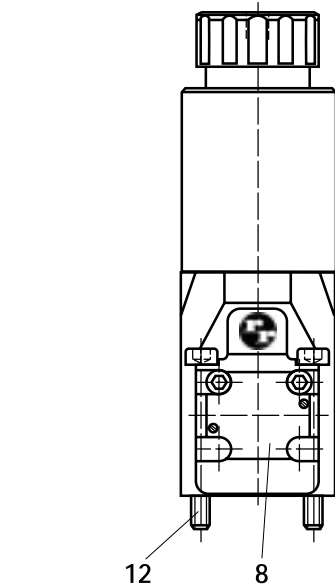
²⁾ For the connection to an AC supply a DC solenoid **must** be used
 which is controlled via a rectifier (see table on the left).

	Symbol	Comments	Operating pressure in PSI (bar)				Flow in GPM (L/min)
			P	A	B	T	
2-way circuit	"P" 	Pressure to $P \geq T$	6092/9138 (420/630)			1450 (100)	6.604 (25)
	"N" 		6092/9138 (420/630)			1450 (100)	6.604 (25)
3-way circuit	"U" 	Pressure to $P \geq A \geq T$	6092/9138 (420/630)	6092/9138 (420/630)		1450 (100)	6.604 (25)
	"C" 		6092/9138 (420/630)	6092/9138 (420/630)		1450 (100)	0.528 (2)
2-way circuit (only for unloading function)	"U" 	Before switching from the initial position to the switched position, pressure must be present in port A. Pressure at $A \geq T$		6092/9138 (420/630)		1450 (100)	6.604 (25)
	"C" 		Pressure at $A \geq T$		6092/9138 (420/630)		1450 (100)
4-way circuit (flow is only possible in the direction of the arrow!)	"D" 	Single ball valve (symbol "U") in conjunction with a base plate $P > A \geq B > T$	6092/9138 (420/630)	6092/9138 (420/630)	6092/9138 (420/630)	1450 (100)	6.604 (25)
	"Y" 		Two ball valve (symbol "C") in conjunction with a base plate $P > A \geq B > T$	6092/9138 (420/630)	6092/9138 (420/630)	6092/9138 (420/630)	1450 (100)

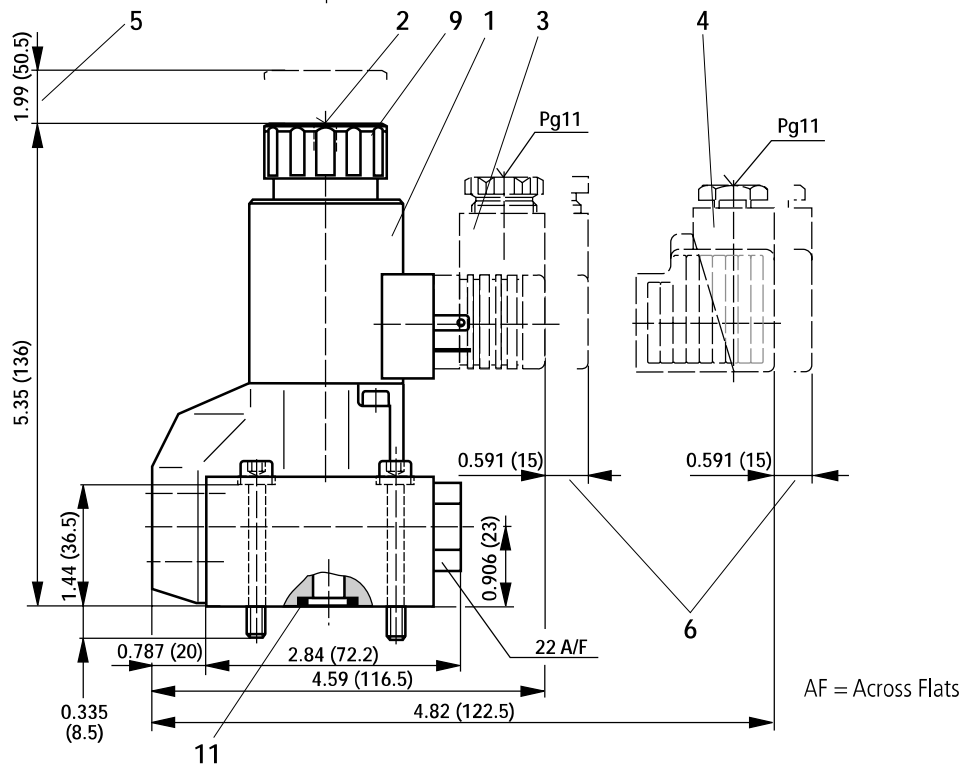
⚠ Attention!

Please take into account the "general guidelines" stated on page 11!

The performance limit was determined with the solenoids at operating temperature, 10% under voltage and with the tank not pressurized.



Required surface finish of interface when mounting the valve without our subplate



AF = Across Flats

- 1 Solenoid "a" (plug-in connector color grey), may be rotated 90°
- 2 Protected manual override "N9"
- 3 Plug-in connector **without** circuitry, Z4, to DIN 43 650 ¹⁾
- 4 Plug-in connector **with** circuitry, Z5, to DIN 43 650 ¹⁾
- 5 Space required to remove the coil
- 6 Space required to remove the plug-in connector
- 8 Name plate
- 9 Mounting bolt, tightening torque $M_A = 3$ ft-lbs (4 Nm)
- 10 **⚠ Attention!**
On 3/2-way poppet valves, 6092 PSI (420 bar) version, port B is a blind counterbore. On 2/2-way poppet valves, 6092 PSI (420 bar) version ports A and B are blind counterbores.
- 11 O-ring 9.25 mm x 1.78 mm
R-ring 9.81 mm x 1.5 mm x 1.78 mm ports A, B and T
O-ring 10.82 mm x 1.78 mm
R-Ring 11.18 mm x 1.6 mm x 1.78 mm port P

12 Subplates, see RA 45 052 Valve mounting bolts (separate supply)

3/2-way poppet valve

- 6100 PSI (420 bar) version
- 4) 10-24 UNC x 1-3/4" (M5 x 45)
tightening torque 6.6 lb-ft (8.9 Nm)
 - 4) 1/4-20 UNC x 1-3/4" (M6 x 45)
tightening torque 11.4 lb-ft (15.5 Nm)

4/2-way poppet valve

- 6100 PSI (420 bar) version
- 4) 10-24 UNC x 3-1/2" (M5 x 90)
tightening torque 6.6 lb-ft (8.9 Nm)
 - 4) 1/4-20 UNC x 3-1/2" (M6 x 90)
tightening torque 11.4 lb-ft (15.5 Nm)

4) 1/4-20 UNC x 3-1/2" (M6 x 90)
tightening torque 11.4 lb-ft (15.5 Nm)

13 Mounting pattern ISO / 4401-3 NFPA
T3.5.1 D03

Subplates:

- 420 bar version
G341/12 SAE-6, G342/12 SAE-8,
G502/12 SAE-10
- 630 bar version
G576 (1/4"), G577 (3/8")

¹⁾ Must be ordered separately, see page 2.